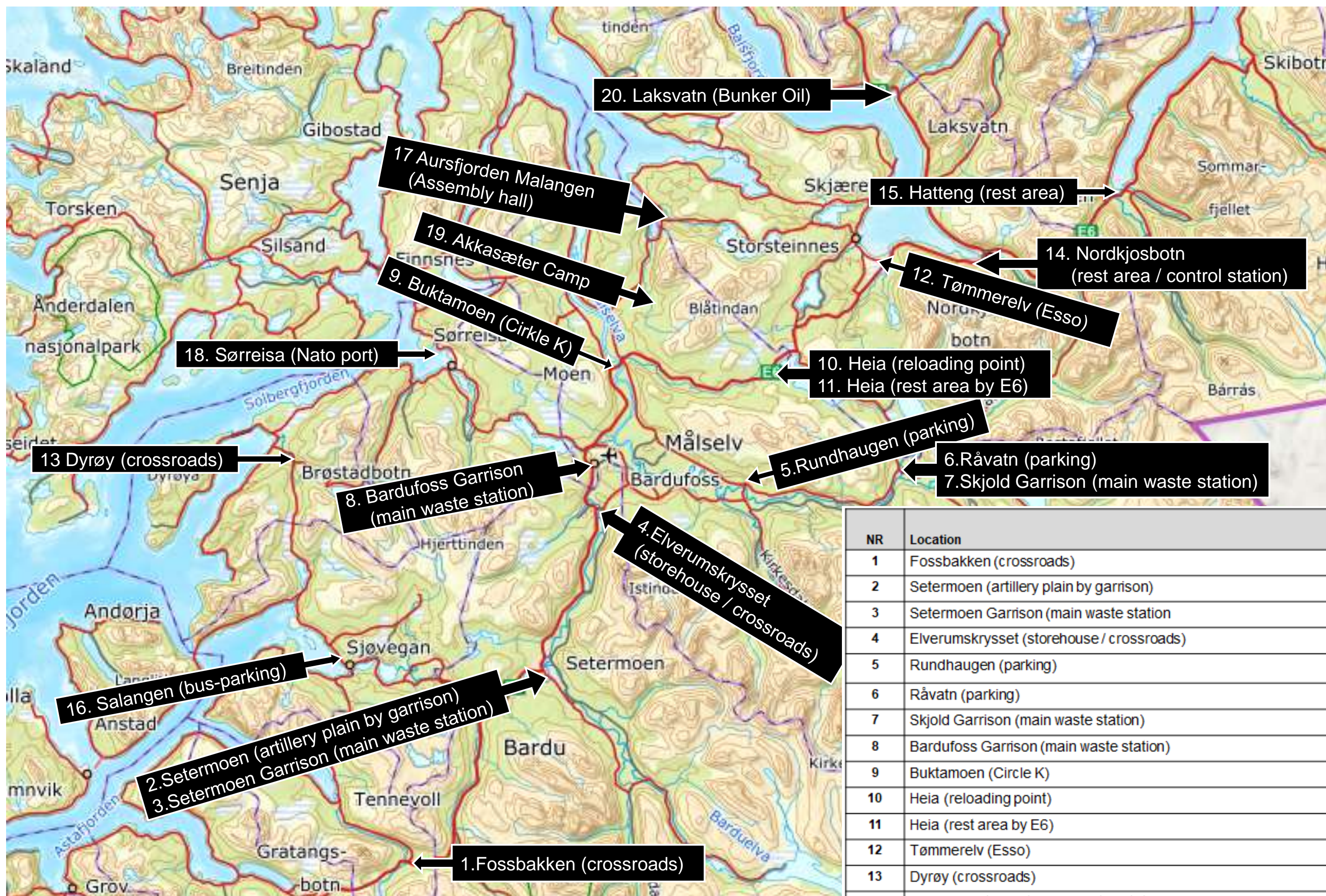


# Waste plan Joint Viking 2023

**Valid from March  
06<sup>th</sup> until March 17<sup>th</sup>**  
(Version 1, per 07.03.23)



NR	Location	Map reference EU89, UTM-sone 33			
1	Fossbakken (crossroads)	N7622627,00 E620897,26	X	X	X
2	Setermoen (artillery plain by garrison)	N7641872,90 E635045,92	X	X	
3	Setermoen Garrison (main waste station)	N7641780,29 E635753,68	X	X	X
4	Elverumskrysset (storehouse / crossroads)	N7659175,95 E640363,26	X	X	
5	Rundhaugen (parking)	N7661603,62 E655689,77	X	X	
6	Råvatn (parking)	N7662772,75 E674420,52	X	X	
7	Skjold Garrison (main waste station)	N7663707,82 E671144,64	X	X	X
8	Bardufoss Garrison (main waste station)	N7664289,48 E639927,39	X	X	X
9	Buktamoen (Circle K)	N7673413,54 E642251,06	X	X	
10	Heia (reloading point)	N7672805,62 E657960,87	X	X	X
11	Heia (rest area by E6)	N7675696,20 E660895,91	X	X	X
12	Tømmerelv (Esso)	N7684538,27 E670200,33	X	X	
13	Dyrøy (crossroads)	N7663824,89 E609062,83	X	X	
14	Nordkjosbotn (rest area / control station)	N7684725,10 E679489,64	X	X	X
15	Hatteng (rest area)	N7692582,52 E694836,36	X	X	
16	Salangen (bus-parking)	N7644022,78 E613364,04	X	X	
17	Aursfjorden, Malangen (community hall)	N7688938,51 E647367,80	X	X	
18	Sørreisa (Nato port)	N7675157,99 E623942,87	X	X	
19	Akkasæter Camp	N7679484,9 E646577,42	X	X	
20	Laksvatn (Bunker Oil)	N7702357,72 E671279,29	X		

**Full containers or other irregularities related to waste,  
→ contact Forsvarsbygg (NDEA);**





**1.** Tommy Nord-Varhaug; +47 480 13 338

**2.** Svein-Tore Haugen; +47 479 74 395

# Waste plan during Joint Viking 2023

**Valid from March 06<sup>th</sup> until March 17<sup>th</sup>**

- Participating forces must collect their own waste and dispose at designated waste collecting points. Leaving waste in the exercise area is strictly forbidden.
- Waste shall be segregated and disposed as follows:

	Type of waste	Description	Disposal
	General/ mixed waste	Waste from bivouac area, food waste, paper/cardboard, plastic, glass/metal from food packaging	Dispose in containers marked "General Waste" at dedicated waste collecting points
	Hazardous waste (HAZMAT)	Used oil, fuel, oil filters, oil rags, absorbents, polluted soil, solvents, antifreeze, brake fluid, spray cans, paint, batteries, etc.	Dispose sealed cans or boxes, marked with content inside Hazardous waste container at dedicated waste points
	Medical/infectious waste	Needles, bandages, etc. Shall be collected in yellow boxes marked Medical Waste/ Risikoavfall	Dispose in yellow boxes marked medical waste/ Risikoavfall inside containers for Hazardous waste at dedicated waste points
	Human waste from portable field toilet (latrine)	Bags containing Human waste from portable field latrines	Dispose in containers marked with Human waste <b>Shall not be mixed with general waste</b>




**Full containers or other irregularities related to waste, contact Forsvarsbygg (NDEA);**

**1.** Tommy Nord-Varhaug; +47 480 13 338

**2.** Svein-Tore Haugen; +47 479 74 395

Detailed maps for each waste point is available through UOC organization

# Waste collecting points JV23, March 06<sup>th</sup> until March 17<sup>th</sup>

NR	Location	Map reference EU89, UTM-sone 33			
1	Fossbakken (crossroads)	N7622627,00 E620897,26	X	X	X
2	Setermoen (artillery plain by garrison)	N7641872,90 E635045,92	X	X	
3	Setermoen Garrison (main waste station)	N7641780,29 E635753,68	X	X	X
4	Elverumskrysset (storehouse / crossroads)	N7659175,95 E640363,26	X	X	
5	Rundhaugen (parking)	N7661603,62 E655689,77	X	X	
6	Råvatn (parking)	N7662772,75 E674420,52	X	X	
7	Skjold Garrison (main waste station)	N7663707,82 E671144,64	X	X	X
8	Bardufoss Garrison (main waste station)	N7664289,48 E639927,39	X	X	X
9	Buktamoen (Circle K)	N7673413,54 E642251,06	X	X	
10	Heia (reloading point)	N7672805,62 E657960,87	X	X	X
11	Heia (rest area by E6)	N7675696,20 E660895,91	X	X	X
12	Tømmerelv (Esso)	N7684538,27 E670200,33	X	X	
13	Dyrøy (crossroads)	N7663824,89 E609062,83	X	X	
14	Nordkjosbotn (rest area / control station)	N7684725,10 E679489,64	X	X	X
15	Hatteng (rest area)	N7692582,52 E694836,36	X	X	
16	Salangen (bus-parking)	N7644022,78 E613364,04	X	X	
17	Aursfjorden, Malangen (community hall)	N7688938,51 E647367,80	X	X	
18	Sørreisa (Nato port)	N7675157,99 E623942,87	X	X	
19	Akkasæter Camp	N7679484,9 E646577,42	X	X	
20	Laksvatn (Bunker Oil)	N7702357,72 E671279,29	X		



**General waste**



**Human waste from  
portable field latrine**



**Hazardous and medical  
infectious waste**



No.	Location	Place reference	Map reference	Waste Fraction	Period
1	Fossbakken	Cross road E6/ FV84	N7622627,00 E620897,26	General waste, Human waste	6/3 – 20/3



No.	Location	Place reference	Map reference	Waste Fraction	Period
2	Setermoen Military museum	Artillery plain	N7641872,90 E635045,92	General waste, Human waste	6/3 – 20/3
3	Setermoen Garrison	KAV 4, main waste station	N7641780,29 E635753,68	General waste, Human waste, Hazardous waste	6/3 – 20/3



No.	Location	Place reference	Map reference	Waste Fraction	Period
4	Elverumskrysset	Storehouse Crossroad E6/FV87	N7659175,95 E640363,26	General waste, Human waste	6/3 – 20/3
8	Bardufoss Garrison	FLO15, waste station	N7664289,48 E639927,39	General waste, Human waste, Hazardous waste	6/3 – 20/3
9	Buktamoen	Circle K gas station	N7673413,54 E642251,06	General waste, Human waste	6/3 – 20/3

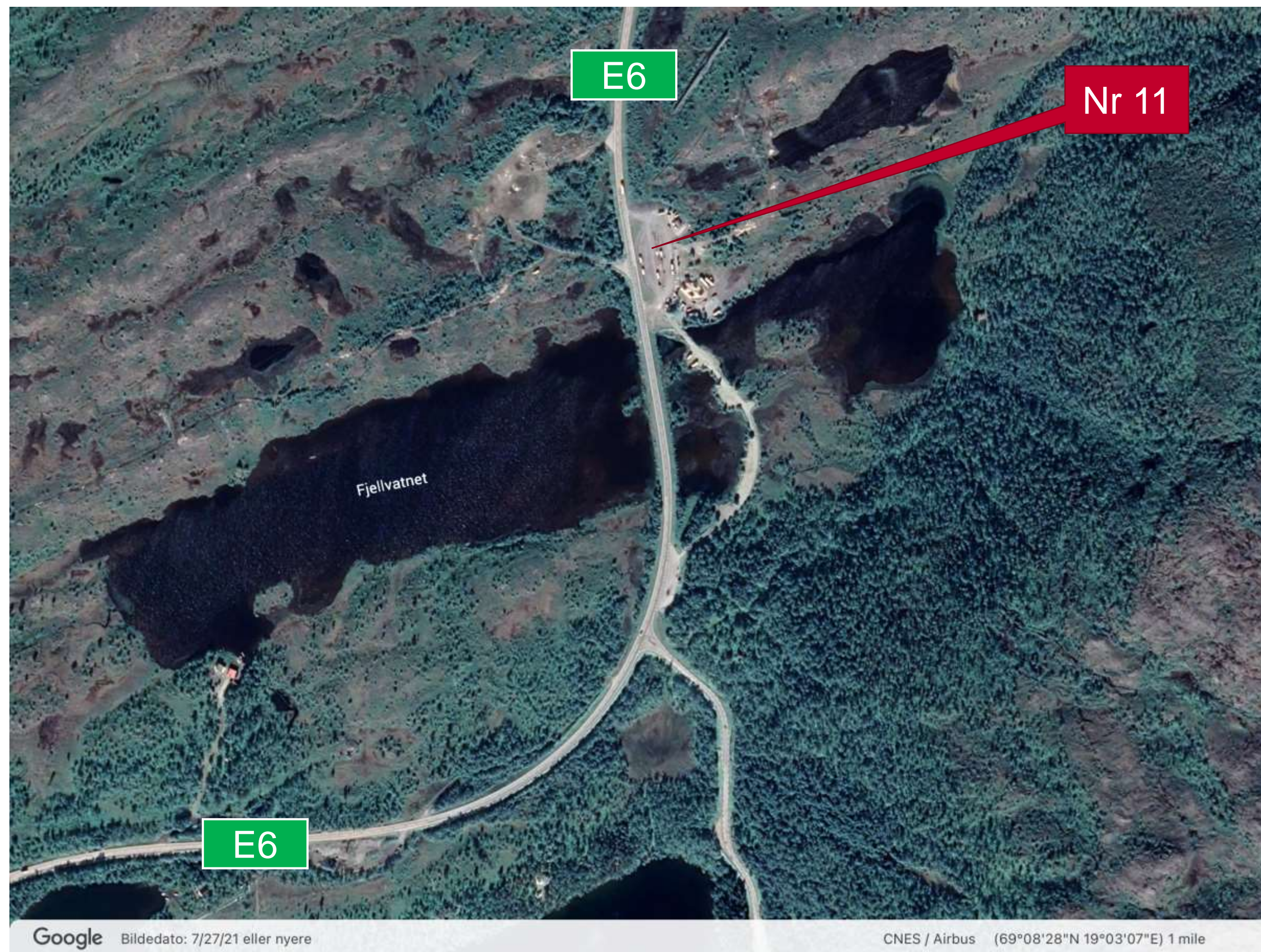


No.	Location	Place reference	Map reference	Waste Fraction	Period
5	Rundhaug	Joker store	N7661603,62 E655689,77	General waste, Human waste	6/3 – 20/3

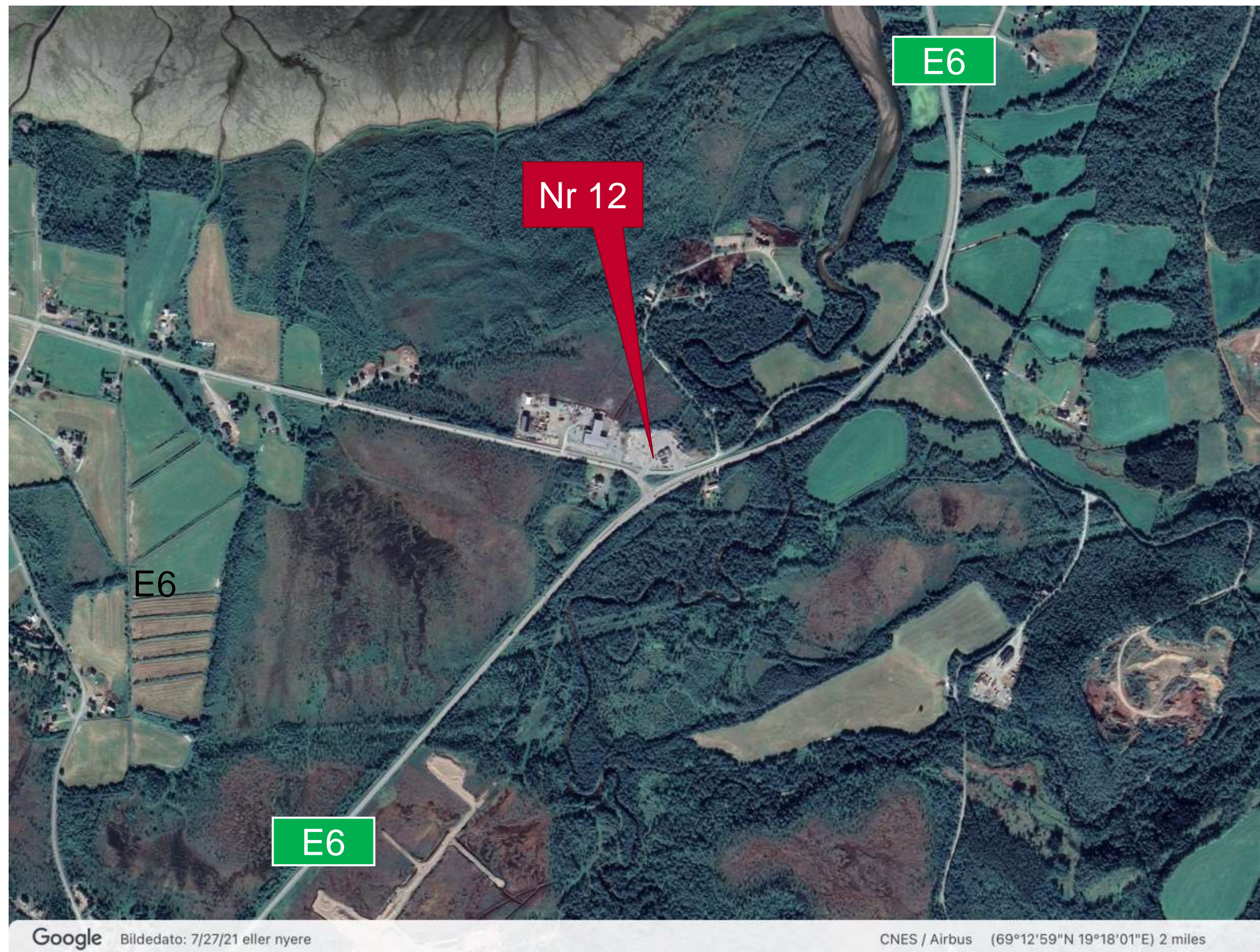


No.	Location	Place reference	Map reference	Waste Fraction	Period
6	Råvatn	Råvatn Parking lot	N7662772,75 E674420,52	General waste, Human waste	6/3 – 20/3
7	Skjold Garrison	Main waste station	N7663707,82 E671144,64	General waste, Human waste, Hazardous waste	6/3 – 20/3
10	Heia	Close to bridge across E6, reloading point	N7672805,62 E657960,87	General waste, Human waste, Hazardous waste	6/3 – 20/3





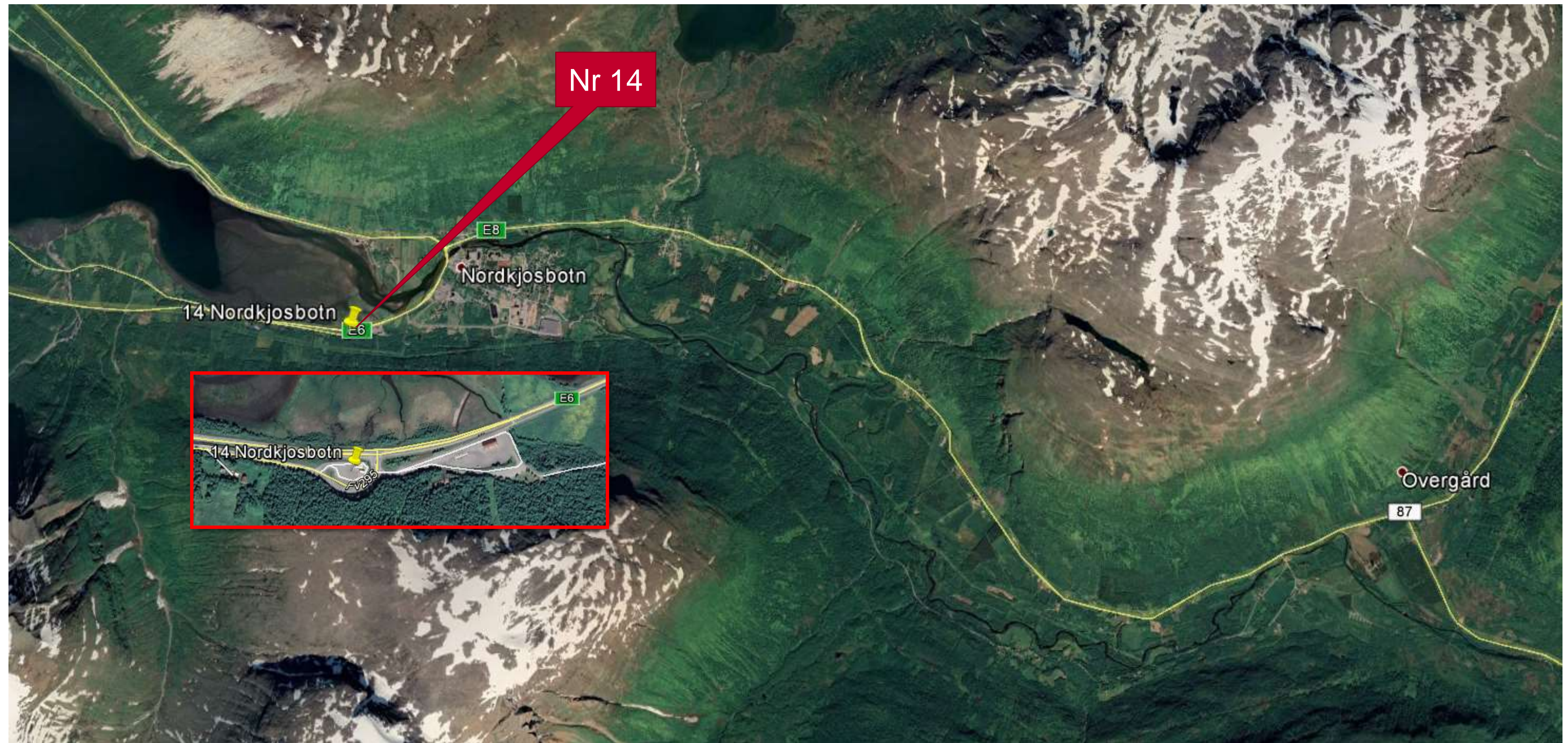
No.	Location	Place reference	Map reference	Waste Fraction	Period
11	Heia	Rest area E6	N7675696,20 E660895,91	General waste, Human waste	6/3 – 20/3



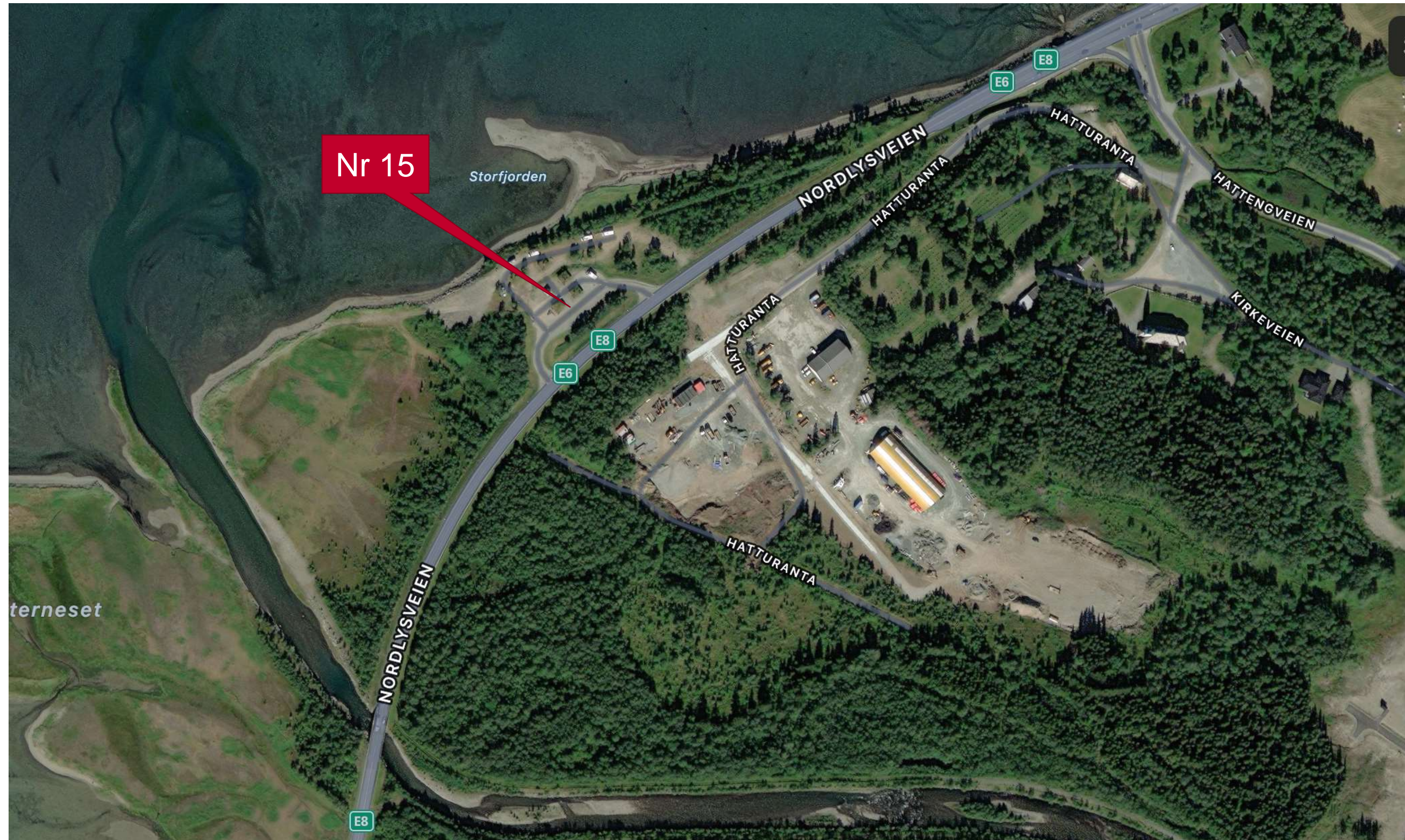
No.	Location	Place reference	Map reference	Waste Fraction	Period
12	Tømmerelv	Esso Gas station	N7684538,27 E670200,33	General waste, Human waste	6/3 – 20/3



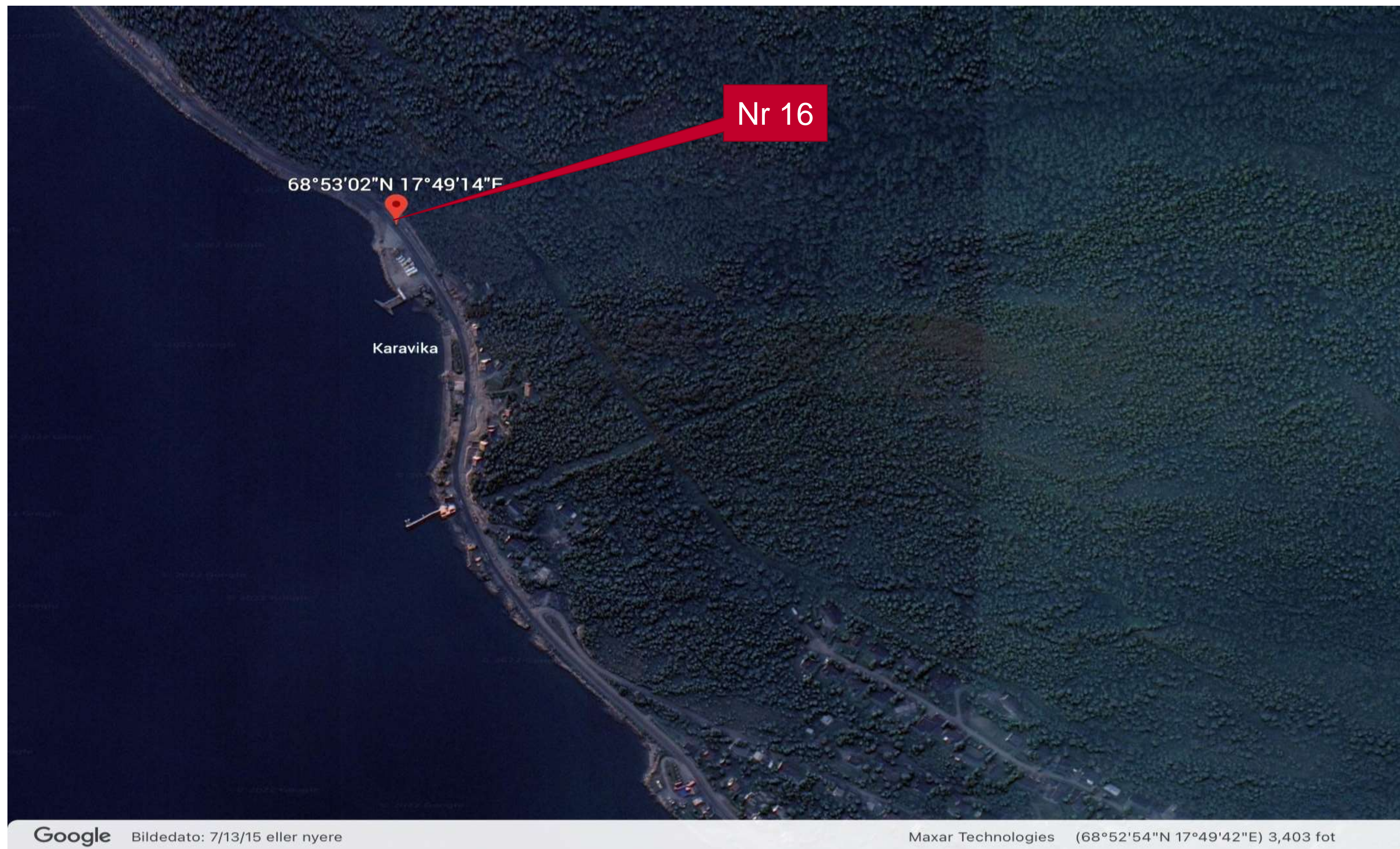
No.	Location	Place reference	Map reference	Waste Fraction	Period
13	Dyrøy	Crossroad FV852/84	N7663824,89 E609062,83	General waste, Human waste	6/3 – 20/3



No.	Location	Place reference	Map reference	Waste Fraction	Period
14	Nordkjosbotn	Resting area/ control station	N7684725,10 E679489,64	General waste, Human waste, Hazardous waste	6/3 – 20/3



No.	Location	Place reference	Map reference	Waste Fraction	Period
15	Hatteng	Rest area E6	N7692582,52 E694836,36	General waste, Human waste	6/3 – 20/3



No.	Location	Place reference	Map reference	Waste Fraction	Period
16	Salangen	Karavika, north of Sjøvegan, RV84	N7644022,78 E613364,04	General waste, Human waste	6/3 – 20/3

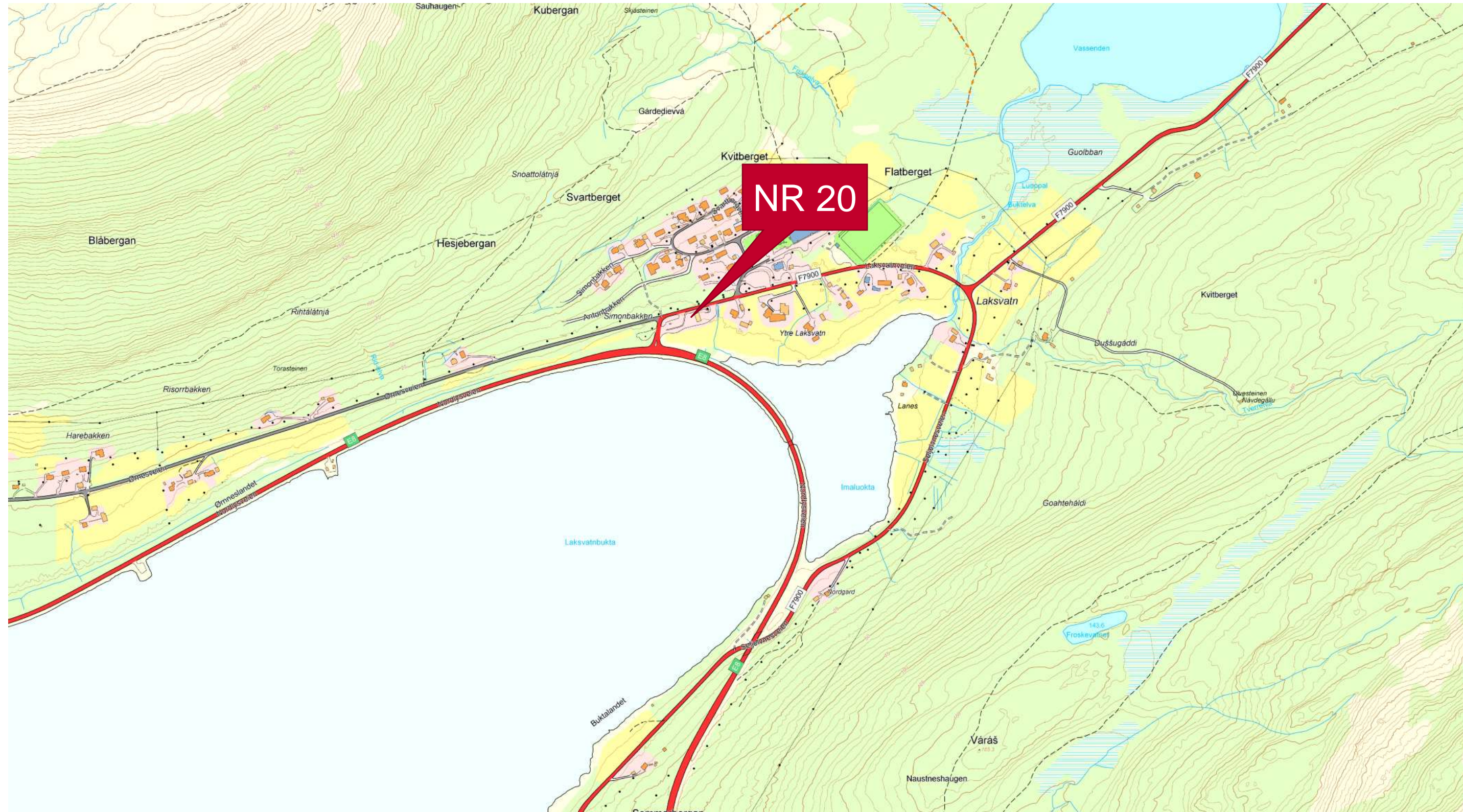


No.	Location	Place reference	Map reference	Waste Fraction	Period
17	Aursfjorden, Malangen	Assembly hall	N7688938,51 E647367,80	General waste, Human waste	6/3 – 20/3



No.	Location	Place reference	Map reference	Waste Fraction	Period
18	Sørreisa	NATO Port	N7675157,99 E623942,87	General waste, Human waste	6/3 – 20/3





No.	Location	Place reference	Map reference	General Waste	Human waste from portable field latrine	Hazardous and medical Infectious waste
20	Laksvatn	Bunker Oil	N7702357,72 E671279,29	X		



No.	Location	Place reference	Map reference	General Waste	Human waste from portable field latrine	Hazardous and medical Infectious waste
19	Akkasæter	Akkasæter camp	EU89, UTM-sone 33 N7679484,9 E646577,42	X	X	